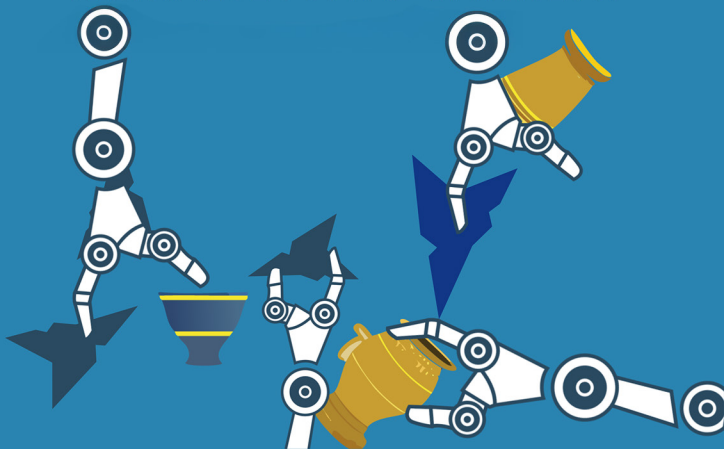




ENABLING BIG DATA COLLECTION:

ADDRESSING HISTORICAL GAPS
IN LARGE-SCALE
ARCHAEOLOGICAL DATASETS.



WHAT IS AUTOMATA?

Using AI-augmented robotics and sensors, the EU-funded AUTOMATA project will create 3D models enriched with archaeometry data, providing a practical and cost-effective solution for digitization, and contributing to the European Collaborative Cloud for Cultural heritage (ECCCH).
Discover our Research Focuses:

RESEARCH FOCUS 3 ENABLING BIG DATA COLLECTION

AUTOMATA is helping archaeology overcome long-standing limitations in data collection. By digitising large collections of ceramics and lithics from different institutions and adding detailed information about their shape and composition, the project is creating a powerful dataset for AI analysis. This will make it easier for researchers to find new patterns in the data and support better decisions in conservation and restoration work.

AUTOMATA-ECCCH.EU



Funded by
the European Union



UK Research
and Innovation

